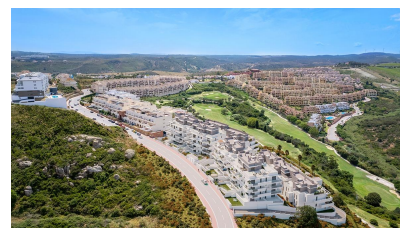
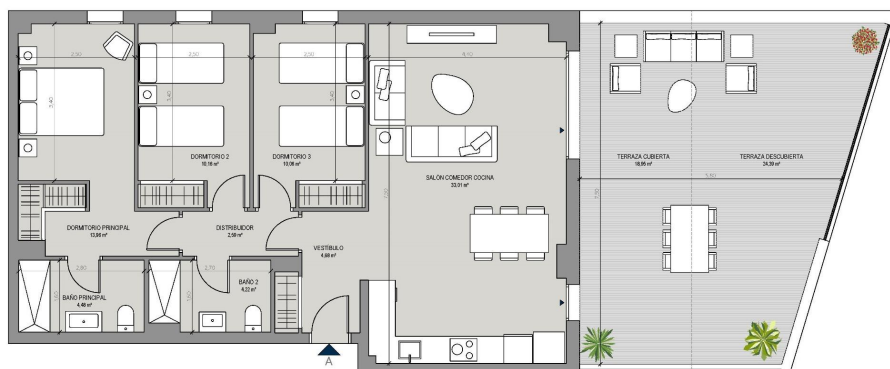




3 bedroom Apartment in Manila

Ref: SP0604

294,000€



Superficie Úti Interior	83,36 m ²
Superficie Úti Exterior Cubierta	18,25 m ²
Superficie Úti Total	101,61 m ²
Superficie Úti Exterior Descubierta	24,39 m ²
Superficie Construida con Comunes	131,62 m ²
Superficie según Decreto 218/2003	
Superficie Útil	97,48 m ²
Superficie Construida	122,83 m ²

PLANTA BAA - LETRA A

0 1 2 3

ESCALA 1:100

ESQUEMA 10

10/05/23

Property type : Apartment

Swimming pool : Communal

House area : 122 m²

Location : Manila

Bedrooms : 3

Bathrooms : 2

✓ Lift

✓ Terrace

✓ Airconditioning

NEW BUILD RESIDENTIAL COMPLEX IN LA DUQUESA, MANILVA New Build residential complex consists of 60 apartments and penthouses with 2 and 3 bedrooms in La Duquesa golf, Manila. The blocks are distributed in ground floor, 2 storeys and penthouse, guaranteeing a variety of housing typologies to suit your needs. All properties has garage and storage room in the basement. Each home stands out for its spacious terraces, providing outdoor spaces ideal for relaxing and enjoying the panoramic views of the golf course that will give you a sense of serenity and wellbeing. The communal areas of the project are designed to provide comfort and luxury, with landscaped spaces that will allow you to connect with nature, a swimming pool with a relaxing beach of sun loungers and a gastroteca that will become the perfect place to socialise and enjoy special moments. This is a place where comfort and quality of life come together to create an exceptional atmosphere. The location is ideal, with a privileged connection to the main roads that make it easy to get around the Costa del Sol and Campo de Gibraltar. In addition, you are surrounded by a complete entertainment environment, with the La Duquesa Marina in the immediate surroundings, a restaurant area to enjoy local and international gastronomy as it is a meeting point for international tourism and a prestigious frontline golf course that will delight lovers of this sport.