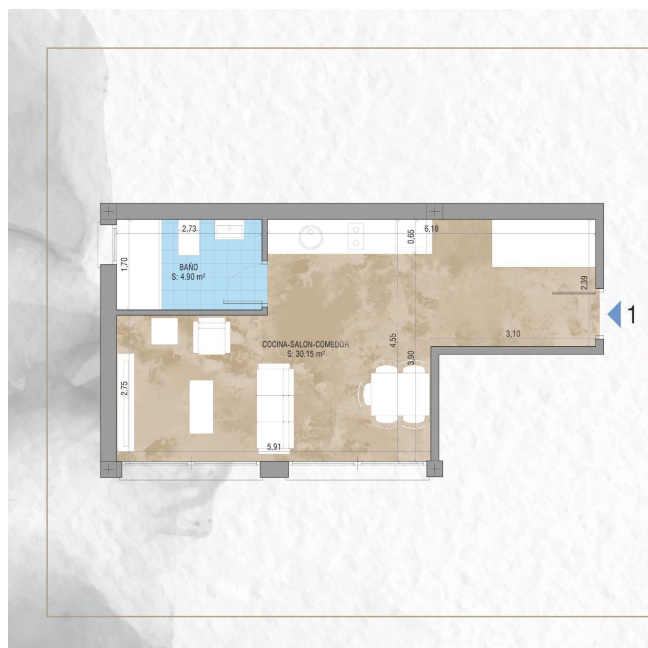




# 0 bedroom Apartment in Monachil

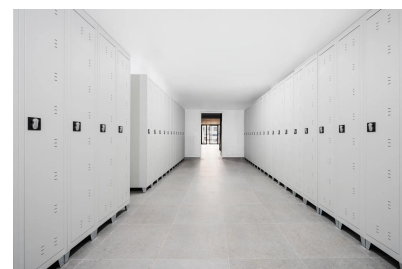
Ref: N7971

155,000€



Estudio nº1 - tipo 1  
Nivel 0

Superficie útil interior (100%) + exterior (50%)	35,05 m <sup>2</sup>
Superficie construida interior + exterior cubierto	49,90 m <sup>2</sup>
Superficie construida cubierta + zona común	49,79 m <sup>2</sup>
Superficie útil Decreto Boja 218/2005	35,05m <sup>2</sup>
Superficie construida Decreto Boja 218/2005	49,79 m <sup>2</sup>



**Property type :** Apartment

**Location :** Monachil

**Bedrooms :** 0

**Bathrooms :** 1

**House area :** 49 m<sup>2</sup>

✓ Lift

✓ Airconditioning

NEW BUILD RESIDENTIAL IN SIERRA NEVADA New Build residential consists of 20 key ready studios and apartments, which perfectly fuse the authenticity of tradition and modern comfort. Every detail has been meticulously selected to provide an exceptional living experience. From kitchens equipped with state-of-the-art technology, to large windows designed to delight with unparalleled views. Floors and bathrooms with Porcelanosa materials to enjoy the maximum guarantee and comfort. One of the few new build complexes in the Sierra Nevada. Enjoy total relaxation after an exciting day on the slopes. The complex has a sauna, perfect for unwinding and rejuvenating body and mind. There is also a versatile multi-purpose space, perfect for sharing unforgettable moments with family and friends. In this idyllic winter wonderland, diversity is at the heart of each residence, ensuring that every resident finds their perfect home. Strategically located, this exclusive residential complex is just a 5-minute walk from the Virgen de las Nieves chairlift, which will transport you directly to the thrilling ski slopes. In the heart of the Sierra Nevada, Pradolano stands as the urban and commercial epicentre, offering residents the convenience of supermarkets, restaurants, pubs and boutiques, giving you all the amenities at your fingertips. Residential understands the importance of having a dedicated space for snow equipment. For this reason, each residence includes a ski locker, garage space and storage room, designed to keep all your winter equipment in perfect condition.