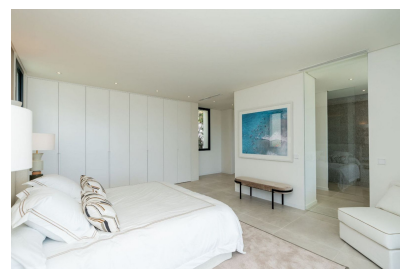




4 bedroom Detached Villa in Benahavís

Ref: MLSC9148047

2,450,000
€



Property type : Detached Villa

Location : Benahavís

Bedrooms : 4

Bathrooms : 4

House area : 556 m²

Plot area : 2430 m²

- ✓ Basement
- ✓ Airconditioning

- ✓ Fireplace

- ✓ Terrace

Monte Mayor offers an exclusive gated community with 24 hour security in a beautiful natural setting with beautiful surroundings and stunning sea views. Just a 15 minute drive from the beach, popular resorts such as Puerto Banús and Marbella are easily accessible. Monte Mayor is spread over 330 acres of low-density homes where homeowners can enjoy the space and privacy they love and deserve. This modern Andalusian villa has a beautiful entrance hall leading to the main entrance and garage on the ground floor. Upon entering the house, you immediately notice the perfect execution of space and structure. The open plan layout of the accommodation includes double height ceilings, two lounges, a dining area, a modern and efficient Italian kitchen with German appliances, an office area and a stylish staircase. Future elevators had to be installed first. The living and dining room features large sliding windows that open onto a large partially covered terrace with breathtaking mountain and ocean views. The indoor living area also has a fireplace. The master bedroom is completely private with a walk-in closet, en-suite, walk-in shower, separate bathroom, double vanity and separate toilet. Large windows lead to a covered balcony with spectacular views. There is also a guest dressing room and utility/laundry room on this level. Upstairs there are 3 guest bedrooms with full en-suite bathrooms. Two rooms have their own spacious terraces, ideal for sunbathing. All rooms have large windows and a wardrobe. Living rooms and bedrooms have underfloor heating and individually controlled air conditioning for the colder days. This makes the house ideal for permanent residence and a luxury holiday home. From the ground floor balcony you have two steps leading down to the garden level pool with unparalleled panoramic views. Downstairs is the basement with a 4 car garage, future laundry room and a large utility room with heating and cooling equipment, water tanks and pool equipment. The oversized garage is flooded with light and can be divided in the future as a TV/cinema room, gym, loft bedroom or apartment with direct pool access. In this case, there will be enough space for 2-3 cars. In the garden you will find a large infinity pool and a coveted patio. The large estate of 2,650 m² is very private, with lawns and fully landscaped areas with various plantings. The garden also has an automatic irrigation system.