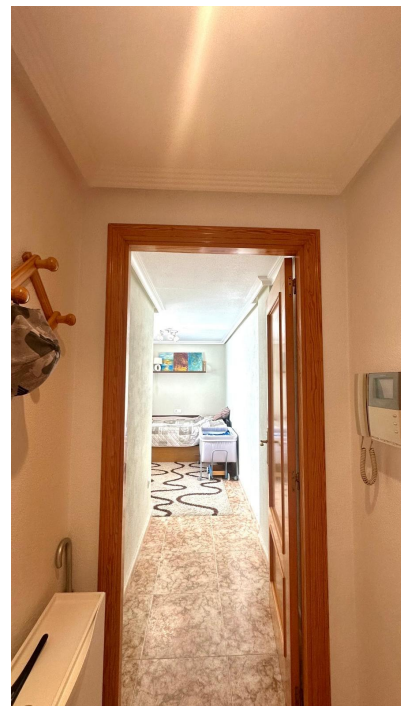




## 2 bedroom Penthouse in Torrevieja

Ref: MLSC1541329

215,000€



**Property type :** Penthouse

**House area :** 78 m<sup>2</sup>

**Location :** Torrevieja

**Bedrooms :** 2

**Bathrooms :** 2

✓ Lift

✓ Furnished

Exclusive Penthouse with Panoramic Views on Calle La Sal - Torrevieja We present this magnificent penthouse on the prestigious Calle La Sal, an unbeatable location that will allow you to enjoy spectacular panoramic views spanning the famous Curva del Palangre, Playa de los Locos, and the well-known Playa del Cura, three of Torrevieja's most iconic coastal spots. This property stands out not only for its unbeatable location but also for its excellent features. It has two bedrooms, one with an en-suite bathroom, providing added privacy and comfort. It also has a second full bathroom, ideal for guests or for daily use. The kitchen is separate, allowing the kitchen and dining areas to be separated, offering greater functionality and spaciousness. In the living area, you will find a charming corner fireplace, perfect for creating a cozy atmosphere during the cooler months of the year. From the living room, you can access the main terrace, an ideal space for enjoying the stunning panoramic views of the sea and the surrounding area. This terrace is perfect for al fresco breakfasts, relaxing moments, or enjoying the Mediterranean sunsets. As a finishing touch, the property has a private solarium, which can be accessed directly from the terrace. This exclusive space is ideal for sunbathing in total privacy, hosting gatherings with friends, or simply relaxing while admiring the sea and the horizon. All this in an area surrounded by amenities: supermarkets, restaurants, pharmacies, public transportation, health centers, and, of course, just steps from the best beaches in Torrevieja. A perfect home both as a permanent residence or for enjoying a dream vacation by the sea.

[contact@s-homes.org](mailto:contact@s-homes.org)

[www.s-homes.es](http://www.s-homes.es)

+34 658 404 467

