



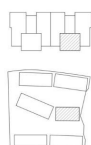
2 bedroom Apartment in Estepona

Ref: N8153

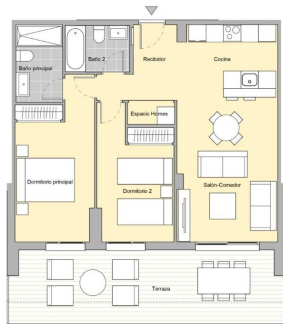
287,000€

BQ9 - PT1 - P01 - PUERTA B

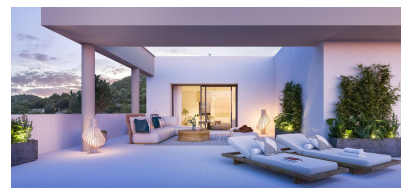
	SUP ÚTIL	EXTANT
Receptor	5.05 m²	m²
Salón Comedor	17.71 m²	m²
Cocina	8.00 m²	m²
Dormitorio principal	13.78 m²	m²
Dormitorio 2	11.08 m²	m²
Baño principal	4.28 m²	m²
Baño 2	3.00 m²	m²
Escalero Homes	1.22 m²	m²
Terraza	23.51 m²	ext.



Superficie Útil Interior	64.66 m²
Superficie Útil Exterior	23.51 m²
Superficie Construida con p.p. 20.	88.34 m²
Superficie útil s/Decreto 218/2005 BOJA	71.13 m²
Superficie construida s/Decreto 218/2005 BOJA	88.71 m²



ESCALA GRÁFICA
0 1 2 3 4 5 6



Property type : Apartment

Swimming pool : Communal

House area : 98 m²

Location : Estepona

Bedrooms : 2

Bathrooms : 2

- ✓ Gymnasium
- ✓ Airconditioning

- ✓ Lift

- ✓ Terrace

NEW BUILD RESIDENTIAL COMPLEX NEAR ESTEPONA New Build residential complex with a contemporary and modern design, with a total of 135 1, 2 and 3 bedroom homes located next to Valle Romano Golf Club in Estepona. The privileged south orientation has made it possible to design bright homes that make the most of the hours of natural light. The ground floor properties with beautiful gardens and the penthouses with solariums, ideal for enjoying the sun and the incomparable Estepona sunsets, stand out. This complete residential complex is completed with spectacular communal areas consisting of a swimming pool with solarium, gymnasium and gardens with native species that transmit the beauty of living in a unique place like Estepona. All of this is integrated into a gated complex to guarantee the security and privacy of its neighbours. Valle Romano Golf is an exceptional course located in Estepona, that hosts every year the most prestigious and demanding tournaments. This 18-hole course spreads over 60 hectares of parkland has a 5-kilometre circuit. It has an average of five tees per hole and spacious greens with numerous flag positions. Its design guarantees enjoyment for amateur players and becomes a challenge for professionals.